

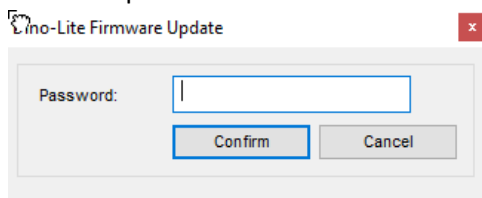
## Firmware Update Instructions

Please make sure to have latest version of DinoCapture 2.0 installed before starting this procedure. If you need to update DinoCapture 2.0, click [here](#) and download the latest version.

To install the updated firmware into any of your Dino-Lite microscopes, please follow the instructions below:

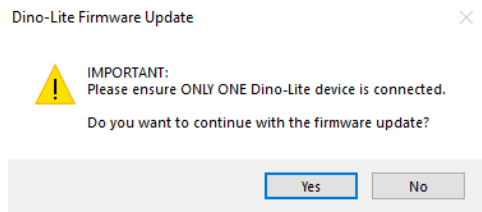
Open DinoCapture 2.0 before connecting any Dino-Lite devices.

1. Press “**Ctrl + Alt + hyphen (-)**” simultaneously to open the “Dino-Lite Firmware Update” window.
2. Enter the password “12345678” and click “Confirm” to continue.

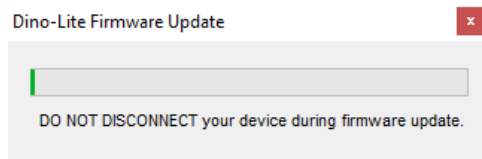


3. Plug in the Dino-Lite device to your PC and press YES to continue with the firmware update procedure.

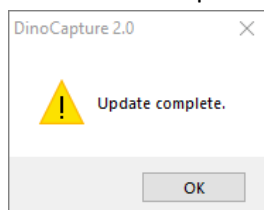
**Note:** The following dialogue box will show only if when the firmware is available for the connected Dino-Lite devices.



4. DO NOT DISCONNECT the device from the computer during firmware update as Dino-Lite’s system files might become corrupt and cease to work properly. If you encounter any issue during or after update completion, please contact us via e-mail [sales@anmo.com.tw](mailto:sales@anmo.com.tw).



5. Press OK to complete the update.



6. Disconnect the device from the computer and plug again.
7. You should now be able to see the image preview which indicates that the device has been successfully updated. To update more Dino-Lites, remove the recently updated Dino-Lite and repeat steps 3 to 5.