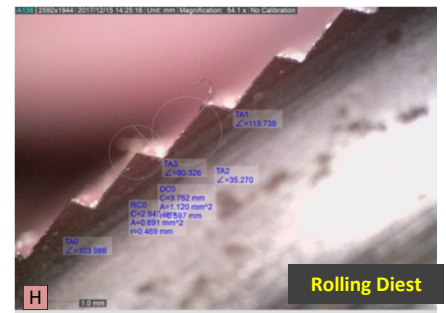
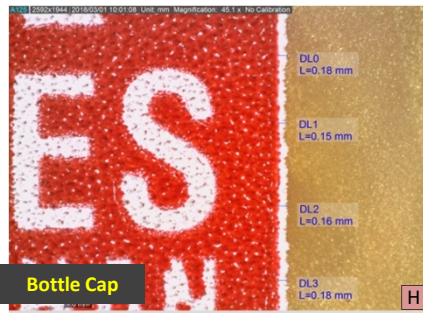


Industri food & beverages sangat ketat dalam mencegah kontaminasi pada makanan. Pada industri ini sangat diuntungkan dalam penggunaan Dino-Lite karena kecepatan dan portabilitas untuk mendapatkan gambar dan video yang diinginkan.

Industri food & beverages meliputi bahan makanan, kemasan makanan, dan banyak lagi sekarang dapat menggunakan mikroskop di seluruh rantai produksi.

### Aplikasi :

- *Size Inspection*
- *Base Material Inspection*
- *Contaminate*
- *Packaging*
- *Etc ..*



### High Series 200X



**AM7915M2T**  
10~220X | 5MP | USB2.0  
ESD Safe | Metal Housing  
Measuring | Gambar & Video | EDOF | EDR



**RK-10VXEXFPX**  
Professional Stand  
22 cm (L) x 15 cm (W) x 23 cm (H)



**MS15X-S1**  
Inspection Stage | 5 cm diameter  
10 cm long x 8 cm wide | Vernier Scale

### High Series 950X



**AM7515MT8A**  
700~900X | 5MP | USB2.0 | FLC  
Measuring | Gambar & Video  
Brightfield / Darkfield | AMR



**RK-10VXEXFPX**  
Professional Stand  
22 cm (L) x 15 cm (W) x 23 cm (H)



**MS15X-S1**  
Inspection Stage | 5 cm diameter  
10 cm long x 8 cm wide | Vernier Scale

### Basic Series 200X



**AM4515ZT**  
20~220X | 1.3MP | USB2.0  
ESD Safe | Plastic Housing  
Measuring | Gambar & Video | Polarizer



**RK-10VXEXFPX**  
Professional Stand  
22 cm (L) x 15 cm (W) x 23 cm (H)



**MS15X-S1**  
Inspection Stage | 5 cm diameter  
10 cm long x 8 cm wide | Vernier Scale

### Eyepiece Series

untuk Trinocular



**Euromex Calibration Scale**  
AE-110CALIB 1mm/100  
(AE-1110)



**Dino-Eye AM7025X**  
5MP | USB2.0  
Measuring | Gambar & Video  
23mm, 30mm, 30.5mm diameter adaptor